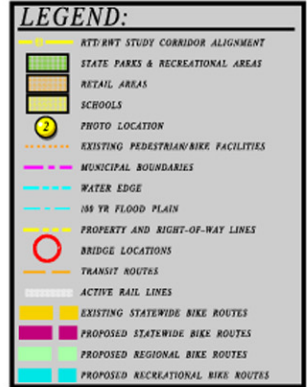


RAIL CORRIDOR EXISTING CONDITIONS DATA:

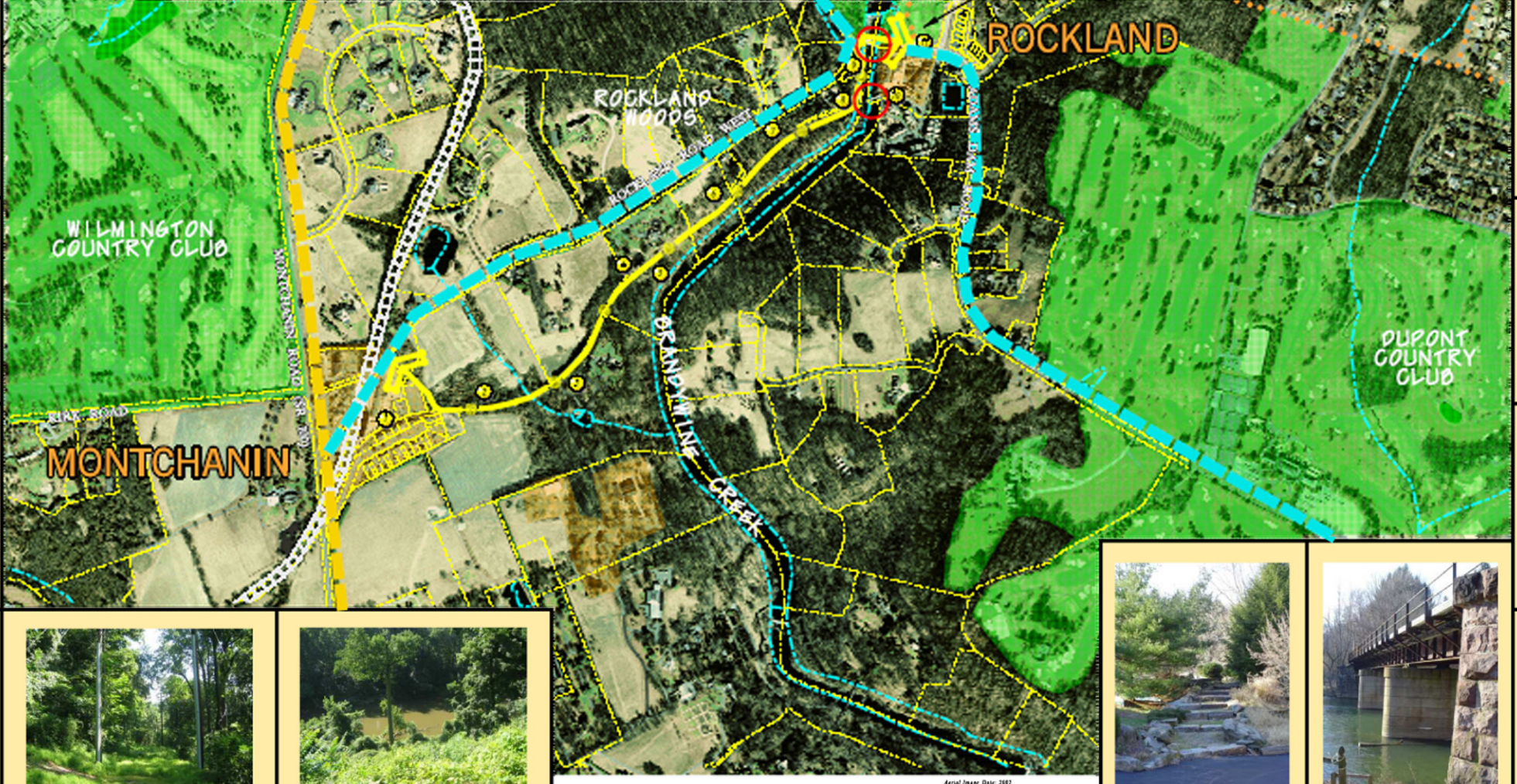
Rail Corridor Study Limits: from the Montchanin Road (SR 100) area to Adams Dam Road and connecting to the Brandywine Creek State Park trail system
 Total Length: 1.1 miles
 Active: No
 Rail Corridor Condition: rails and ties have been removed, corridor is lightly wooded on the west end and the remainder is very low grasses and weeds
 Bridges and Other Structures: 1 railroad bridge and 1 roadway bridge over Brandywine Creek
 Water Crossings/Culverts: 1
 Roadway Crossings: 1 roadway and 1 driveway
 Physical Barriers: short segment of the very west end has been converted to a bio-retention facility and it is not feasible to cross the Brandywine Creek bridge and continue to the park trail system
 Average Right-of-Way Width: n/a
 Rail Corridor Right-of-Way Ownership: unknown ownership
 Rail-with-Trail Potential: n/a



10- LOOKING SOUTHWEST TO NORTH



10- LOOKING SOUTHWEST



BRANDYWINE CREEK STATE PARK & TRAIL



1- LOOKING EAST



2- LOOKING WEST



3- LOOKING NORTHEAST



4- LOOKING NORTHEAST



6- LOOKING NORTHEAST



5- LOOKING SOUTH



7- LOOKING NORTHEAST



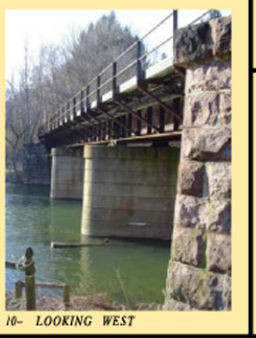
8- LOOKING NORTHEAST



9- LOOKING NORTH



10- LOOKING WEST



10- LOOKING WEST



11- LOOKING WEST

AVERAGE USER TRAVELING SPEEDS & CORRIDOR TRAVEL TIMES
 (Study Corridor Distance = 1.1 miles)

Bicycle	13.1 miles per hour	approx. 5 min.
Walking	3.1 miles per hour	approx. 20 min.
Jogging	7.0 miles per hour	approx. 10 min.
Wheel Chair	2.4 miles per hour	approx. 25 min.



For Preliminary Planning Purposes Only

DELAWARE RTT/RWT FACILITIES MASTER PLAN
 ROCKLAND TRACK
 EXISTING CONDITIONS MARCH 2006

