

## Obeying Bicycle Laws Will Keep You Safe!

Riding a bicycle is a great way to get exercise and see the beautiful sights of the First State! While on your bike, however, keep in mind that there are certain laws that every cyclist must follow. These laws ensure the safety of the cyclists, motorists, and pedestrians.

Bicycle safety laws are strictly enforced in Delaware, so be sure to study them carefully!

For Delaware bicycle laws go to [www.deldot.gov/Programs/bike](http://www.deldot.gov/Programs/bike)

## Bicycle Maps are available from the:

**Delaware Department  
of Transportation**

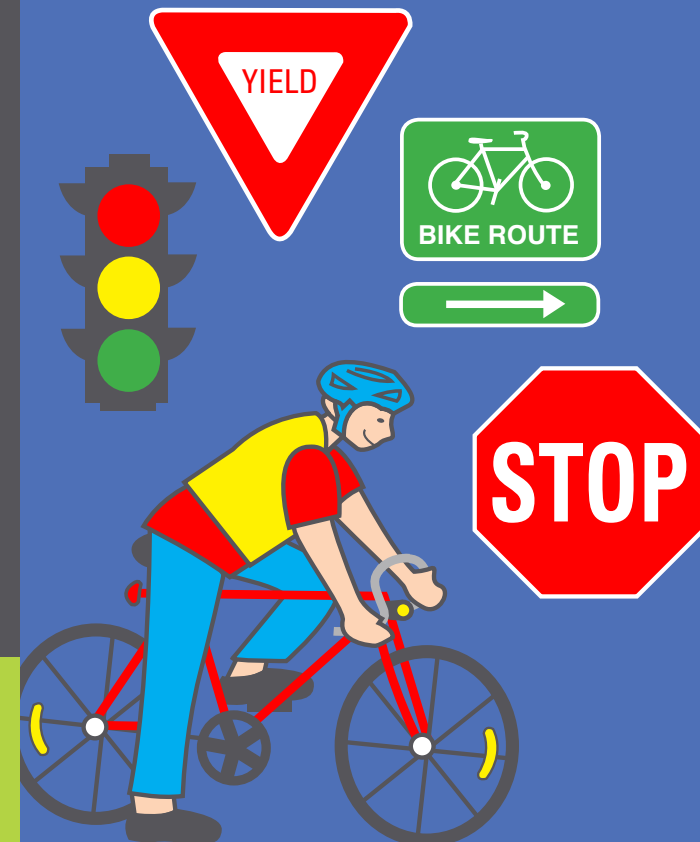
800 Bay Road  
Dover, DE 19903  
800-652-5600

[www.deldot.gov/Programs/bike](http://www.deldot.gov/Programs/bike)



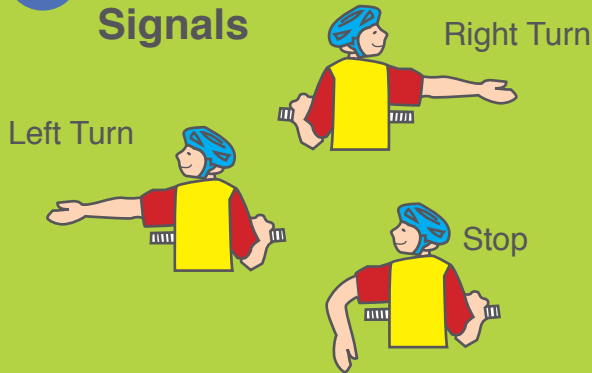
## Bicycle Riders.... Know the Law

### Before You Ride!



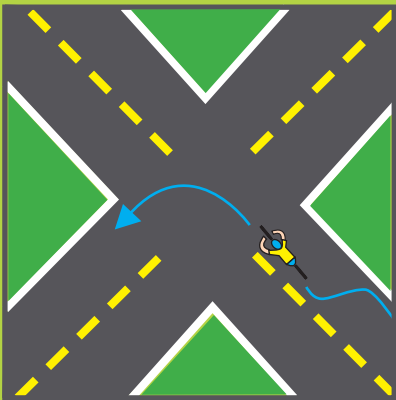
# Delaware is Serious About Enforcing Bike Safety Laws

## 1 Use Hand Signals

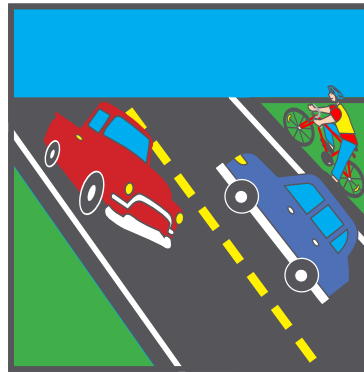


## 2 Right Way to Turn Left

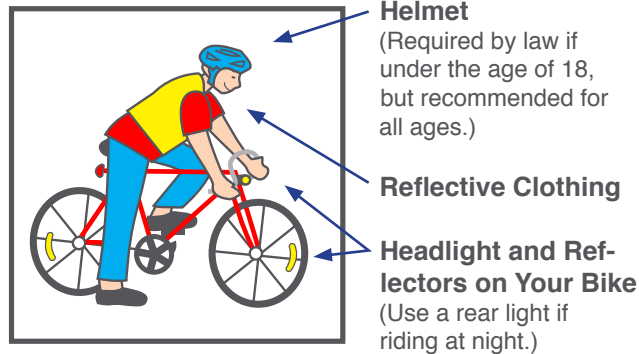
Ride on right, carefully move to the left of the lane for left hand turn.



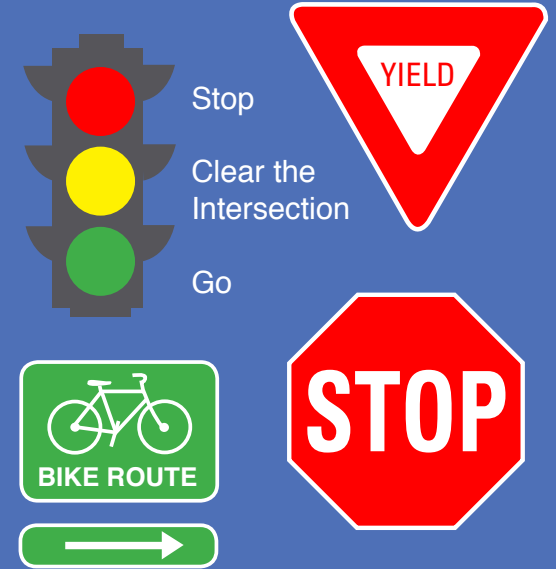
## 3 Always Ride in the Same Direction as Traffic



## 4 Use Proper Safety Equipment



## 5 Obey All Traffic Signs & Signals



## 6 Don't Drink & Ride!

Drinking and driving laws are the same for cars and bikes. Do not use a cell phone when riding a bike.

## 7 Headphones Must Not Cover Both Ears!

